

This program was compiled by Noel Grundon
for Training & Revision Workshops
of the Northern Area Judging Panel
of the Queensland Regional Judging Panel
of the AOC Judging System.

Phalaenopsis amabilis

– Where are you?

March 2020

Acknowledgement of Sources.

- All photographs in this program of AOC Awards (Slides 19 to 37 & 39 to 50) are copyrighted to the Australian Orchid Council and are used with permission.
- Photographs provided by Bruce Gray (Slide 12), Jon Cara (Slides 13, 14 & 15) and Don Mapleson (Slide 17) are copyrighted to them and are used with their permission.
- Illustrations (Slides 10, 11 & 16) come from Hermon Sweet's monograph on *Phalaenopsis* species, and that source is acknowledged.
- I acknowledge all sources with thanks.

Nomenclature

Names of species used in slides 12, 13, 14, 15 & 17 in the program conform with the current rulings of the AOC (March 2020), i.e. to use the accepted names in the RHS World Checklist of Selected Plant Families

(<https://wcsp.science.kew.org/qsearch.do>).

Where a source cites synonyms, that synonym is displayed thus: *Phalaenopsis amabilis* subsp. *rosenstromii* (Syn. var. *papuana*).

About 30 years ago, mericlones labelled '*Phalaenopsis amabilis*' were imported from Taiwan. They were superior to any Qld collected *Phalaenopsis amabilis*. Many were subsequently granted AOC awards.

In July 2008, AOC awarded an AM to *Phalaenopsis amabilis* 'Ben Yu'. This cultivar was available in USA and was assessed for an award in 2009 by the AOS. Eric Christensen looked closely at this plant and stated its correct name was *Phalaenopsis aphrodite* var. *formosana*. The AOS then awarded it an AM as *Phalaenopsis aphrodite* subsp. *formosana* 'Ben Yu' AM/AOC-AOS.

John Rees and some other senior AOC judges are now concerned about the ‘trueness-to-label’ of AOC awarded *Phalaenopsis amabilis*.

John Rees has asked the NAJP to assess which AOC awarded *Phalaenopsis amabilis* and *Phalaenopsis aphrodite* may be ‘true-to-label’.

The problem

- There are 3 white-flowered species of *Phalaenopsis* whose petals are much broader than their sepals: *Phal. amabilis*, *Phal. aphrodite* and *Phal. philippinensis*.
- How do we tell them apart?
- According to world authorities on the taxonomy of *Phalaenopsis* species [Hermon Sweet & later Eric Christenson in "Phalaenopsis: A Monograph"] *Phal. philippinensis* is easily distinguished from the other two white species by its marbled grey-green leaves; the other 2 species have clear green leaves.

Phal. amabilis* & *Phal. aphrodite

- *Phal. amabilis* - distributed from Sumatra and Java east to the southern Philippines, New Guinea, and northeastern Queensland.
- *Phal. aphrodite* - native to the northern Philippines, and southeastern Taiwan and a few adjacent islands.
- Eric Christenson calls the Taiwanese form *Phal. aphrodite* subsp. *formosana*.
- The IAP (International Phalaenopsis Alliance) and the American Orchid Society (AOS) agree with Eric Christenson on the status of the species from Taiwan.

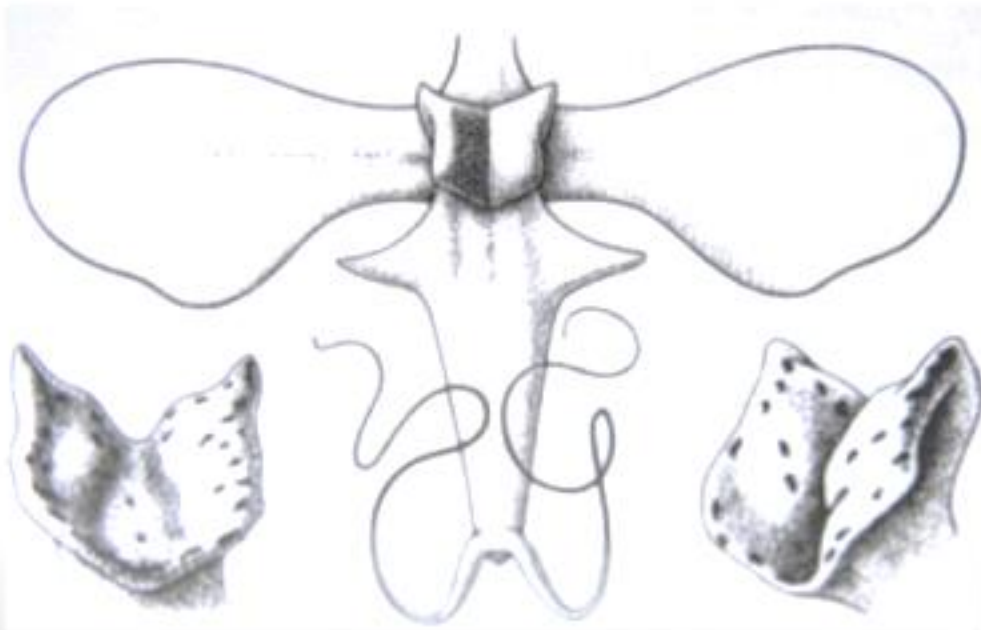
How do you tell if *Phalaenopsis amabilis* is 'true-to-label'?

How do you tell subsp. *rosenstromii* from *amabilis* from Indonesia?

- For the answer look closely at:
- 1. The shape of the labellum, and
- 2. The number of teeth on the posterior edge of the callus in the throat of the labellum (i.e. the edge at the back of the labellum).

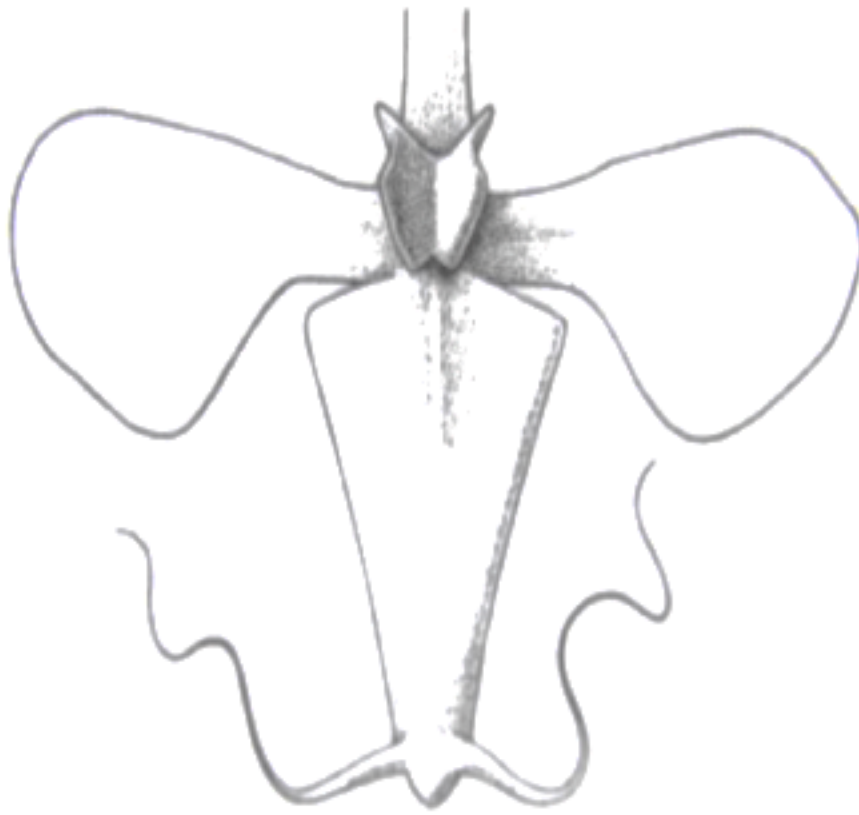
Labellum of *Phalaenopsis amabilis*

- Quoting from Eric Christenson's "Phalaenopsis: A Monograph":



- “The midlobe of the labellum of *Phal. amabilis* [from Indonesia] is [narrowly triangular] up to 23mm long with 2 triangular wings at its base.
- The callus is shield-shaped with the posterior edge smoothly notched between one pair of blunt teeth.”

Labellum of *Phalaenopsis amabilis* subsp. *rosenstromii*



- “The midlobe of the labellum of subsp. *rosenstromii* is shorter, narrowly triangular with inconspicuous teeth at the base.”
- The callus is the same: “shield-shaped with the posterior edge smoothly notched between one pair of blunt teeth.”

***Phalaenopsis amabilis* subsp. *amabilis* labellum. Note long and narrowly triangular mid-lobe with 2 small wings and 2 teeth on posterior edge of shield shaped callus. Plant from Java.**



***Phalaenopsis amabilis* subsp. *rosenstromii* labellum.** Note long and narrowly triangular mid-lobe without prominent wings and 2 teeth on posterior edge of shield shaped callus. Plant from North Qld.



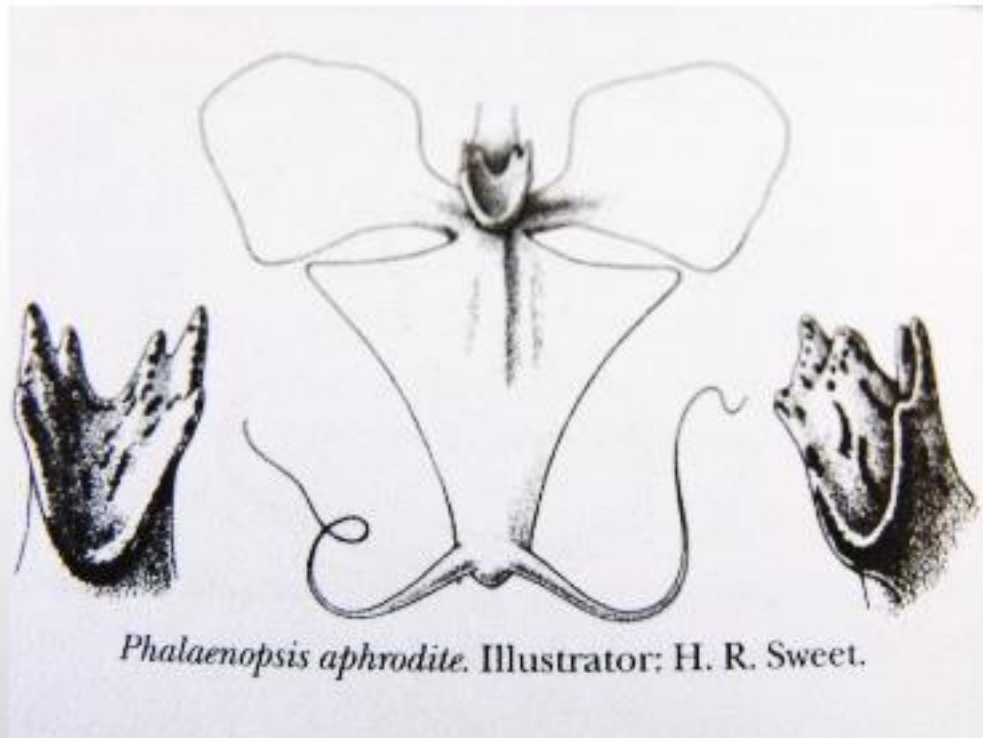
***Phalaenopsis amabilis* subsp. *rosenstromii* (Syn. var. *papuana*)**
labellum. Note long and narrowly triangular mid-lobe with 2 prominent wings and 2 teeth on posterior edge of shield shaped callus. Plant from Port Moresby. Two prominent wings on mid-lobe of labellum suggest subsp. *amabilis* but site of collection suggests subsp. *rosenstromii* (Syn. var. *papuana*).



***Phalaenopsis amabilis* subsp. *rosenstromii* (Syn. var. *papuana*)**
labellum. Note long and narrowly triangular mid-lobe with 2 prominent wings and 2 teeth on posterior edge of shield shaped callus. Plant from Papua. Two prominent wings on mid-lobe of labellum suggest subsp. *amabilis* but site of collection suggests subsp. *rosenstromii* (Syn. var. *papuana*).



Labellum of *Phalaenopsis aphrodite*



Phalaenopsis aphrodite. Illustrator: H. R. Sweet.

- The midlobe of the labellum of *Phal. aphrodite* “is longer than in *amabilis*, up to 30mm long, broadly triangular, with no teeth or triangular wings at its base.
- The posterior edge of the callus is notched forming 4 erect teeth.”

***Phalaenopsis
aphrodite*
subsp.
formosana
labellum.
Note broadly
triangular
mid-lobe and
4 teeth on
posterior
edge of shield
shaped callus.**



Which of the AOC awarded *Phalaenopsis amabilis* are 'true-to-label'?

Award #	Award	State	Plant
609	HCC	QLD	Phalaenopsis amabilis 'Heather'
927	HCC	QLD	Phalaenopsis amabilis 'Sam'
940	AM	QLD	Phalaenopsis amabilis 'Heather'
1193	HCC	NSW	Phalaenopsis amabilis 'Q'lander'
1950	HCC	QLD	Phalaenopsis amabilis 'Sunnydale'
2982	HCC	VIC	Phalaenopsis amabilis subsp. rosenstromii 'Ken'
3754	HCC	NSW	Phalaenopsis amabilis 'Annette'
3763	AD	VIC	Phalaenopsis amabilis 'Formosa'
3811	HCC	QLD	Phalaenopsis amabilis 'Warrigal'
3890	AM	QLD	Phalaenopsis amabilis 'Ben Yu'
3891	HCC	QLD	Phalaenopsis amabilis 'Warrigal 4N'

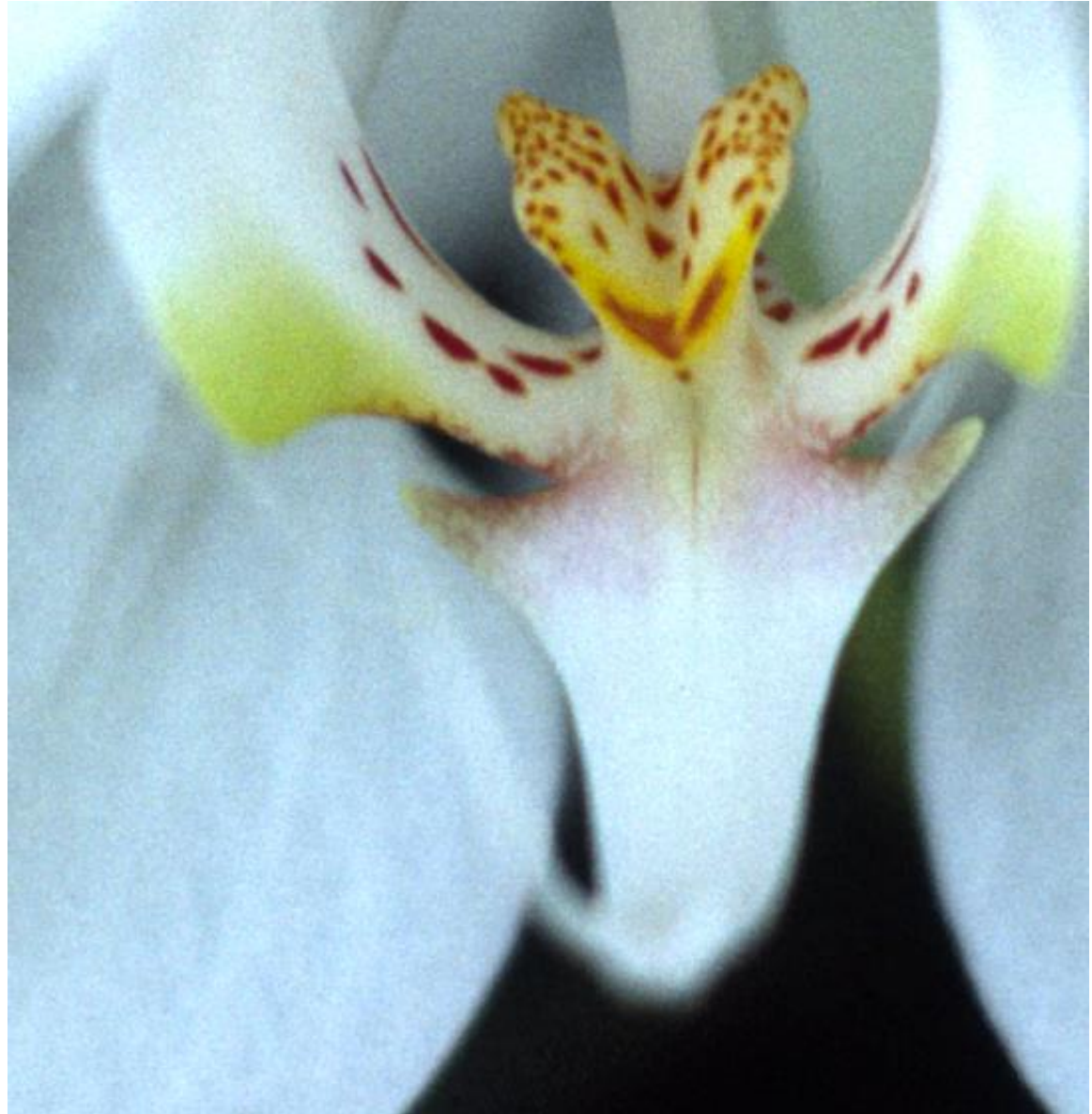
#609 & #940 *Phalaenopsis amabilis* 'Heather'



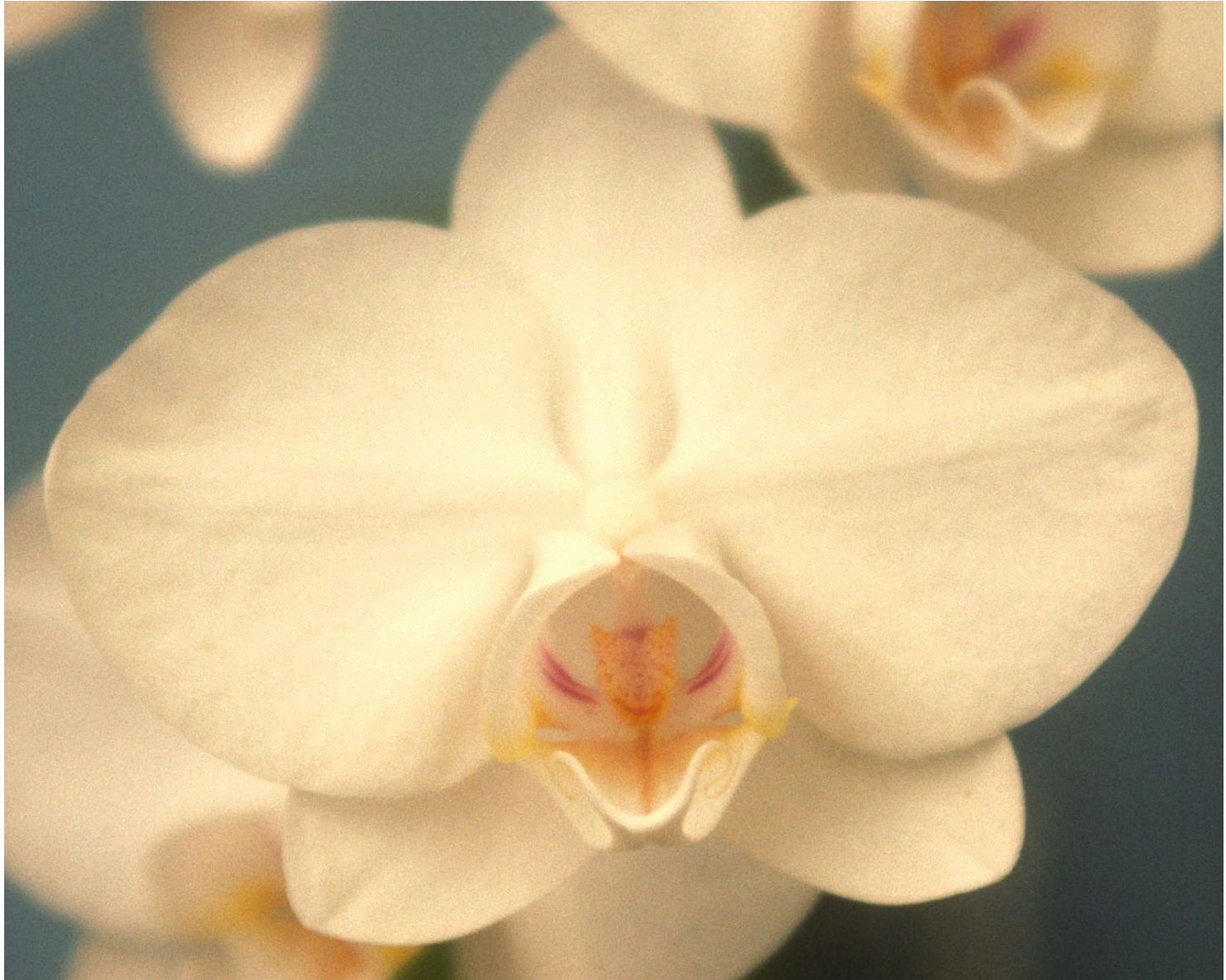
#609 & #940 *Phalaenopsis amabilis* 'Heather'

Note: Narrow triangular mid-lobe and only 2 teeth on posterior edge of broad shield shaped callus.

Features typical of *Phalaenopsis amabilis*.



#927 *Phalaenopsis amabilis* 'Sam'



#927 *Phalaenopsis amabilis* 'Sam'

Note: Broadly triangular mid-lobe. Posterior edge of callus is too indistinct to clearly look at number of teeth.

Shape of mid-lobe suggests more likely to be *Phalaenopsis aphrodite* or hybrid than *Phalaenopsis amabilis*.



#1193 *Phalaenopsis amabilis* 'Q'lander'



#1193 *Phalaenopsis amabilis* 'Q'lander'

Note: Broadly triangular mid-lobe. Posterior edge of callus is indistinct but suggests 4 teeth.

Shape of mid-lobe suggests more likely to be *Phalaenopsis aphrodite* or a hybrid than *Phalaenopsis amabilis*.



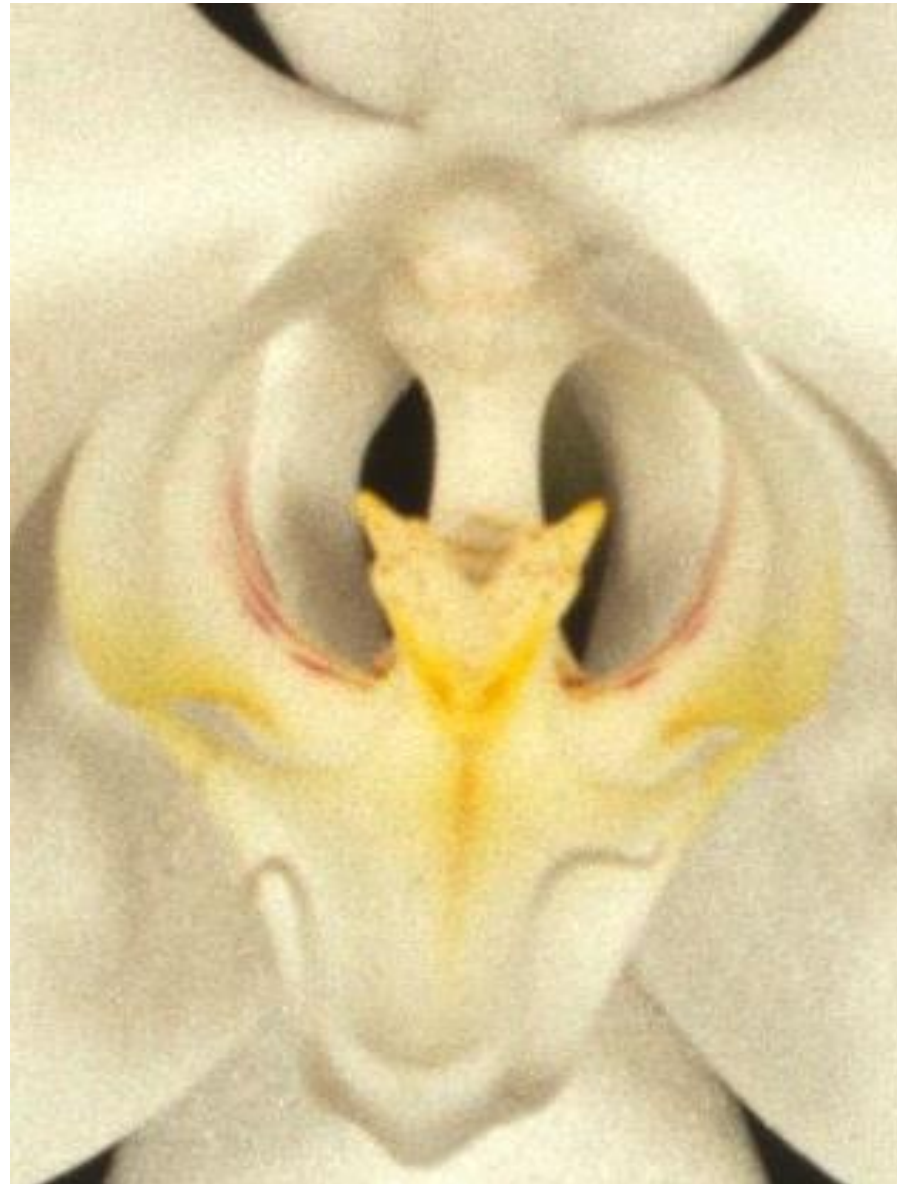
#1950 *Phalaenopsis amabilis* 'Sunnydale'



#1950 *Phalaenopsis amabilis* 'Sunnydale'

Note: All features of labellum somewhat indistinct. Suggestion of a narrow and not broadly triangular mid-lobe. Posterior edge of callus is not clear but suggests 2 teeth on posterior edge.

More likely to be *Phalaenopsis amabilis*.



#2982 *Phalaenopsis amabilis* subsp. *rosenstromii* 'Ken'

AOC 2982



#2982 *Phalaenopsis amabilis* subsp. *rosenstromii* 'Ken'

Note: Very indistinct photo. Suggestion of a long triangular narrow mid-lobe. Can not see posterior edge of callus

May be *Phalaenopsis amabilis* subsp. *rosenstromii*.



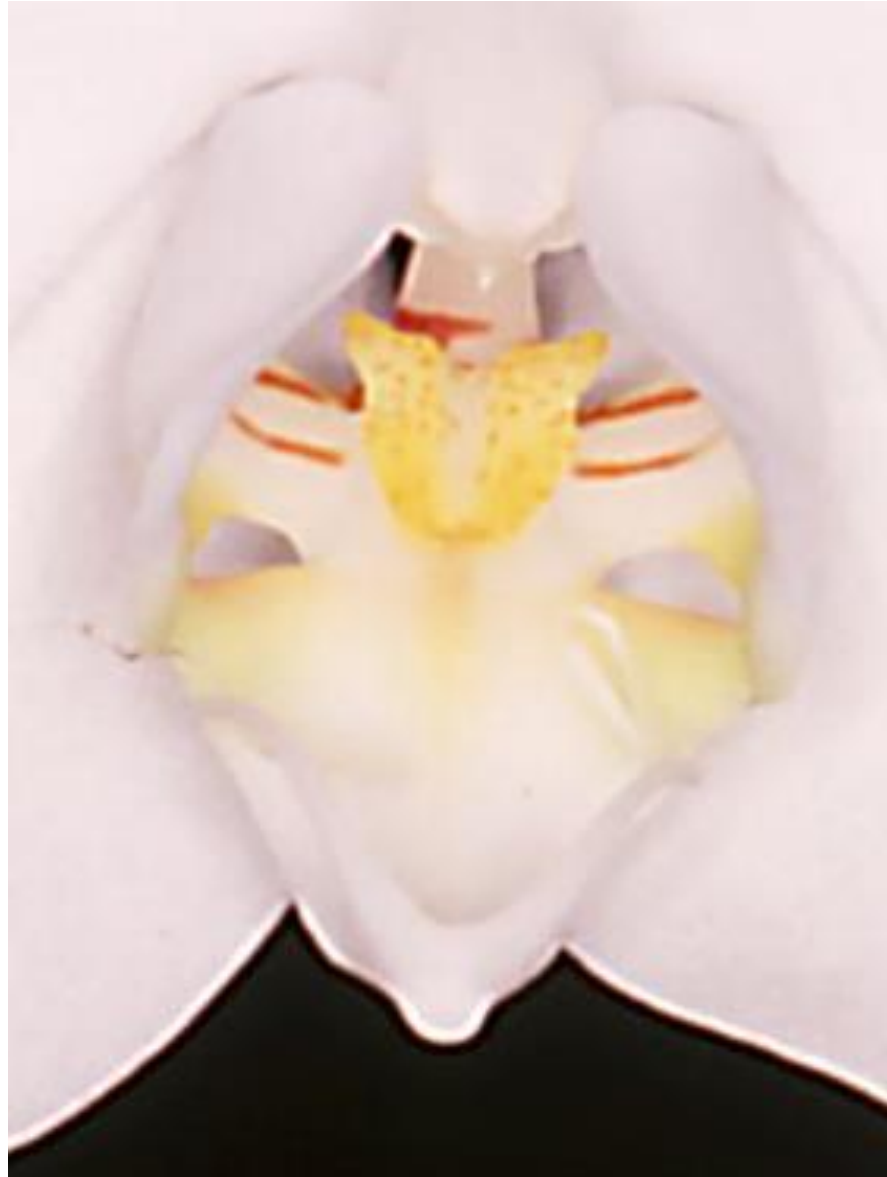
#3754 *Phalaenopsis amabilis* 'Annette'



#3754 *Phalaenopsis amabilis* 'Annette'

Note: Indistinct photo. Maybe a narrow triangular mid-lobe with 2 teeth on posterior edge of callus.

May be *Phalaenopsis amabilis*.



#3763 *Phalaenopsis amabilis* 'Formosa'

Note: AD for variegated foliage. From the ownership and cultivar name of 'Formosa' it is probably *Phalaenopsis aphrodite* subsp. *formosana*.



#3811 *Phalaenopsis amabilis* 'Warrigal'



#3811 *Phalaenopsis amabilis* 'Warrigal'

Note: Broadly triangular mid-lobe with 4 teeth on posterior edge of shield shaped callus.

More likely to be a hybrid or *Phalaenopsis aphrodite* subsp. *formosana*.



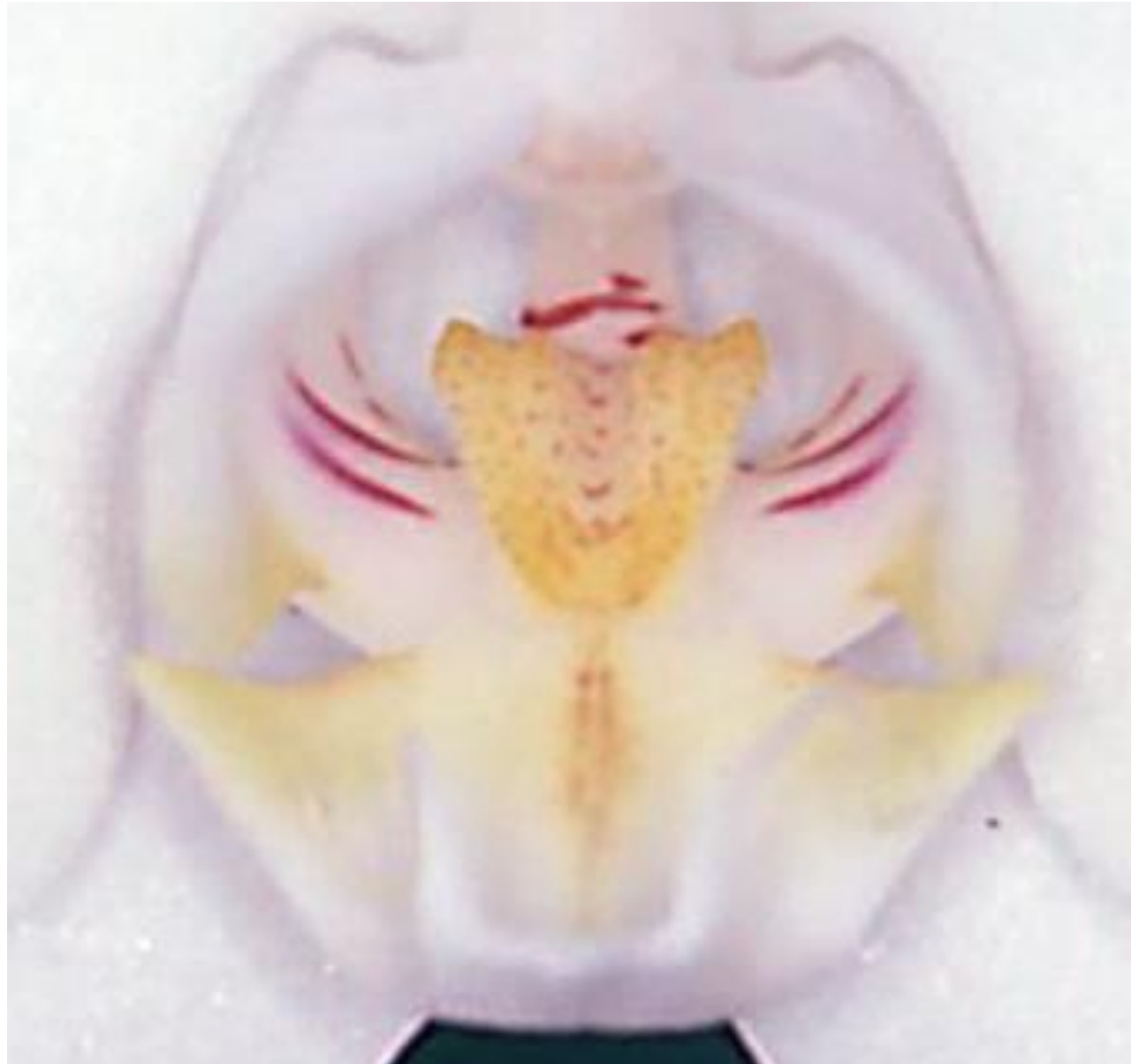
#3890 *Phalaenopsis amabilis* 'Ben Yu'



#3890 *Phalaenopsis amabilis* 'Ben Yu'

Note: Broadly triangular mid-lobe with 4 teeth on posterior edge of shield shaped callus.

Typical features of *Phalaenopsis aphrodite* subsp. *formosana*.



#3891 *Phalaenopsis amabilis* 'Warrigal 4N'



#3891 *Phalaenopsis amabilis* 'Warrigal 4N'

Note: Broadly triangular mid-lobe but suggestion of 4 teeth on posterior edge of shield shaped callus.

May be a hybrid or *Phalaenopsis aphrodite* subsp. *formosana*.



Which of the AOC awarded *Phalaenopsis aphrodite* are 'true-to-label'?

Award #	Award	State	Plant
1391	HCC	SA	<i>Phalaenopsis aphrodite</i> subsp. <i>formosana</i> 'Nairne'
1396	HCC	QLD	<i>Phalaenopsis aphrodite</i> subsp. <i>formosana</i> 'Jeanne'
1602	AM	NSW	<i>Phalaenopsis aphrodite</i> subsp. <i>formosana</i> 'Neal's'
1608	HCC	QLD	<i>Phalaenopsis aphrodite</i> 'Martinique'
2092	HCC	QLD	<i>Phalaenopsis aphrodite</i> subsp. <i>formosana</i> 'Fong Ping #'
4775	HCC	QLD	<i>Phalaenopsis aphrodite</i> 'Gwen's Delight'

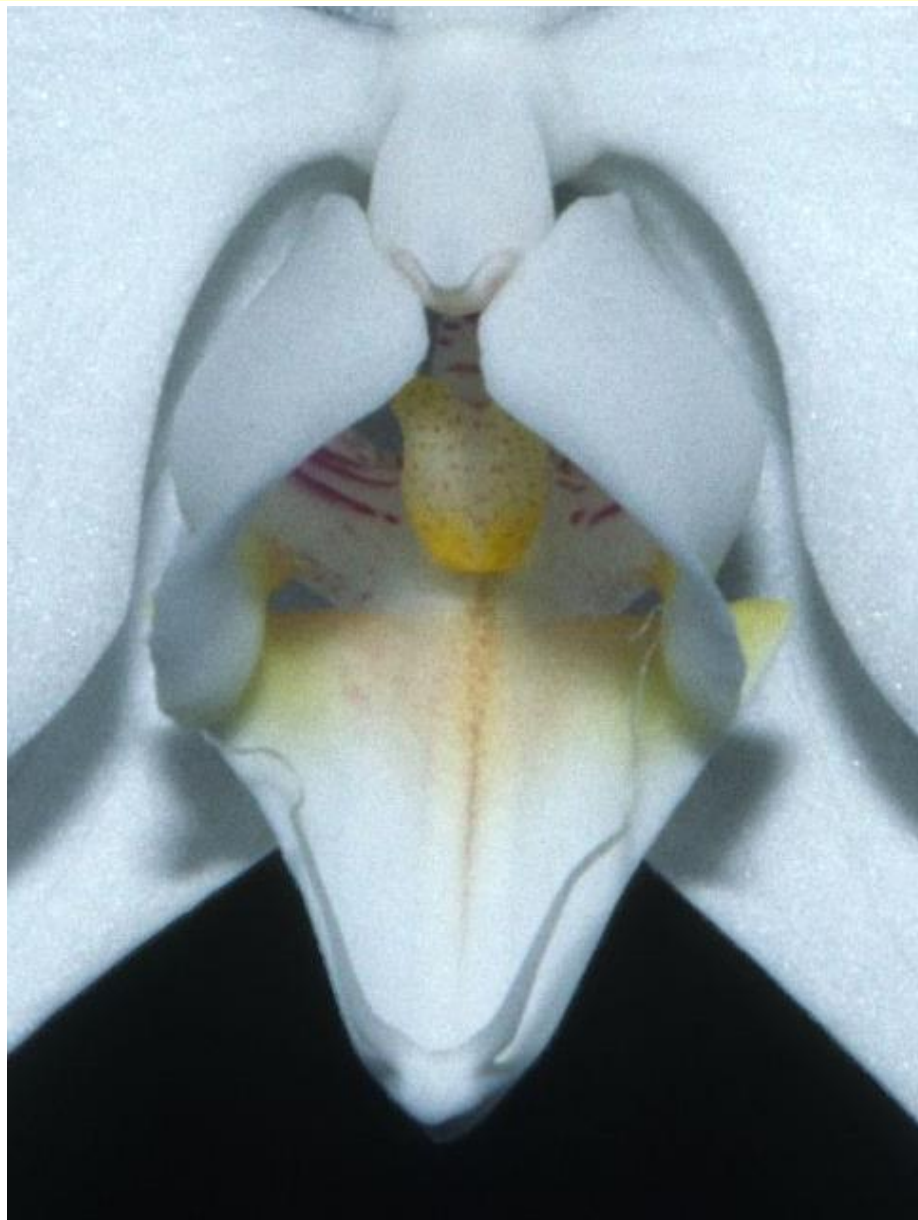
#1391 *Phalaenopsis aphrodite* subsp. *formosana* 'Nairne'



#1391 *Phalaenopsis aphrodite* subsp. *formosana* 'Nairne'

Note: Note a broadly triangular mid-lobe but posterior edge of callus not visible.

More likely
Phalaenopsis
aphrodite.



#1396 *Phalaenopsis aphrodite* subsp. *formosana* 'Jeanne'



#1396 *Phalaenopsis aphrodite* subsp. *formosana* 'Jeanne'

Note: Broadly triangular mid-lobe with 4 teeth on posterior edge of shield shaped callus.

Typical features of *Phalaenopsis aphrodite* subsp. *formosana*.



#1602 *Phalaenopsis aphrodite* subsp. *formosana* 'Neal's'



#1602 *Phalaenopsis aphrodite* subsp. *formosana* 'Neal's'

Note: Broadly triangular mid-lobe with 4 teeth on posterior edge of shield shaped callus.

Typical features of *Phalaenopsis aphrodite* subsp. *formosana*.



#1608 *Phalaenopsis aphrodite* 'Martinique'



#1608 *Phalaenopsis aphrodite* 'Martinique'

Note: Broadly triangular mid-lobe with 4 teeth on posterior edge of shield shaped callus.

Typical features of *Phalaenopsis aphrodite* subsp. *formosana*.



#2092 *Phalaenopsis aphrodite* subsp. *formosana* 'Fong Ping #1'



#2092 *Phalaenopsis aphrodite* subsp. *formosana* 'Fong Ping #1'

Note: Broadly triangular mid-lobe with 4 teeth on posterior edge of shield shaped callus.

Typical features of *Phalaenopsis aphrodite* subsp. *formosana*.



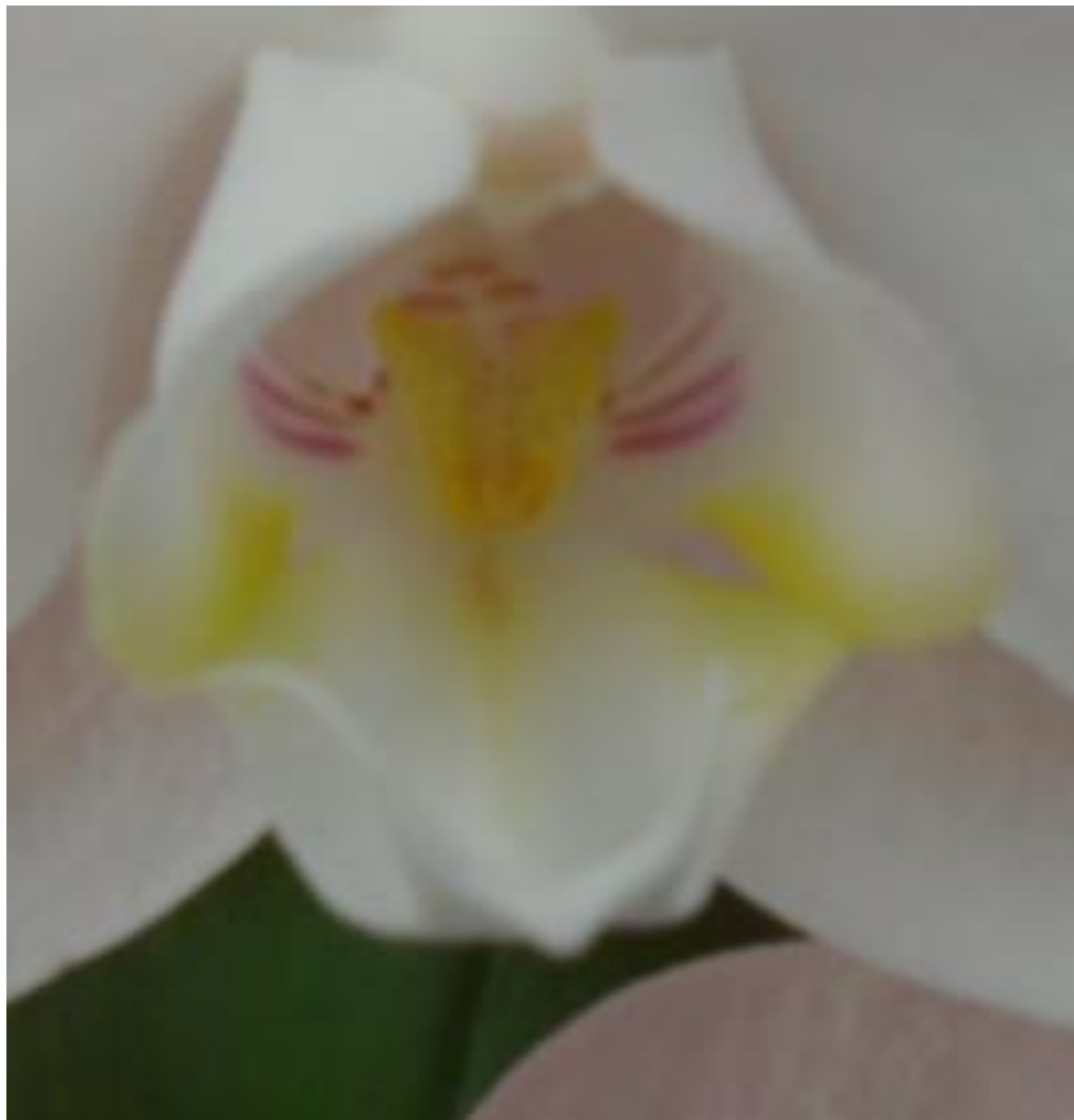
#4775 *Phalaenopsis aphrodite* 'Gwen's Delight'



#4775 *Phalaenopsis aphrodite* 'Gwen's Delight'

Note: Very indistinct photo. Suggestion of broadly triangular mid-lobe but callus is very indistinct.

May be *Phalaenopsis aphrodite* or a hybrid.



Thank you
for
watching!

